

[Fusion Support](#) > [Hardware Setup](#) > [Barcode Scanners](#)[Follow](#)

How To Configure A Honeywell Genesis 7580g Barcode Scanner

This lesson will provide instructions on how to configure the Honeywell Genesis 7580g Stationary Barcode Scanner. The most common application of this specific device is for facility access purposes (as it includes a presentation stand and can be easily mounted to a desk or turnstile), but you might also utilize it to perform patron look-ups, retrieve products within Point of Sale, or redeem Guest Passes.

1. Device Introduction



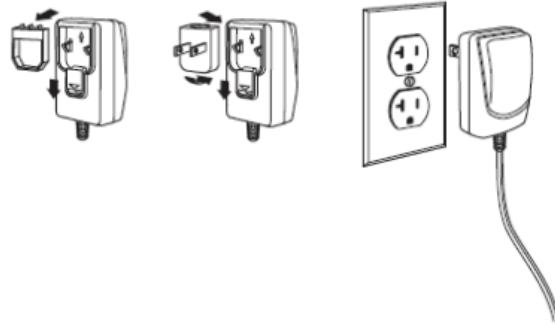
The Genesis 7580g is Honeywell's premium stationary barcode scanner. This device is commonly used for facility access as it can easily be mounted to a gate/turnstile or counter. Additionally, the device can be used for:

1. Member look-up.
2. Product scanning.
3. Guest pass redemption.

You will define this scanner's "job" when you configure the device within Fusion (Step 9.2).

2. Power Up the Barcode Scanner

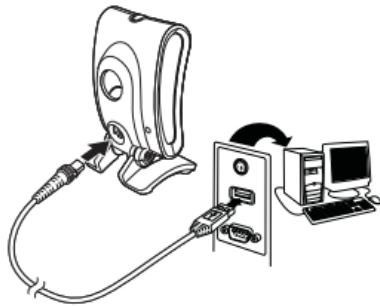
Power Supply Assembly (if included)



To begin, connect the scanner to a power source using the power cable supplied.

3. Connect the Barcode Scanner to the Workstation

Connecting the Scanner USB:



Next, plug the scanner into one of your computer's available USB ports.

4. Program USB Serial Emulation



Now, you must program the scanner for USB serial emulation. To do this, use the scanner to scan the barcode above.

The scanner should emit a distinct noise when it has successfully scanned the barcode.

Hint: If you're having difficulty scanning the barcode onscreen, you can access the 7580g's Quick Start Guide from [here](#). Print page 7 of this guide and scan the USB Serial barcode from the printed page.

5. Add a Carriage Return Suffix



Next, you must add a carriage return suffix by scanning the barcode above.

Again, the scanner should emit a distinct noise when it has scanned the barcode successfully.

Hint: If you're having difficulty scanning the barcode onscreen, you can access the 7580g's Quick Start Guide from [here](#). Print page 10 of this guide and scan the Add CR Suffix barcode from the printed page.

6. Select the Desired Scan Mode



This scanner supports a number of scan modes that can be enabled for different applications. Below is a summary of the available modes:


1. **Presentation Mode (Default):** The scanner is activated when it "sees" a barcode (use this mode if you only anticipate light to moderate traffic at the scanner's location).
2. **Streaming Presentation Mode:** The scanner leaves the scan illumination on all the time and continuously searches for barcodes (use this mode if you anticipate heavy traffic at the scanner's location).
3. **Presentation Mode - Mobile Phone:** The scanner is optimized to read barcodes from mobile phones or other LED displays (use this mode if you anticipate using this scanner for guest pass redemption from patron phones).

Scan the appropriate barcode above to change the scanner's scan mode.

After selecting the appropriate scan mode, **unplug the scanner**.

Hint: A variety of other optional settings can be configured for the scanner. If you're interested in exploring some of these options, please reference the complete User Guide [here](#).

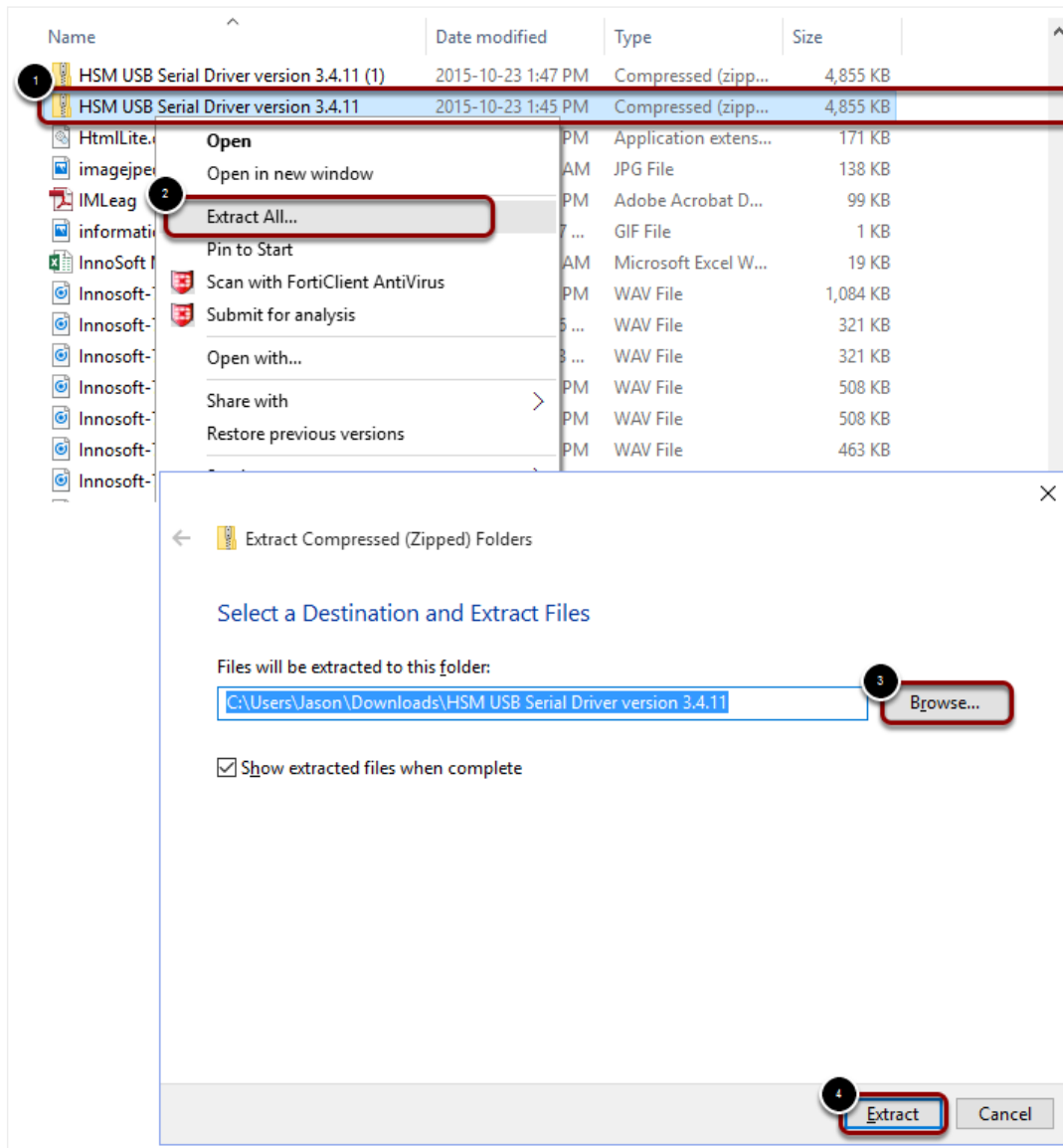
7. Download and Install the Honeywell Scanning and Mobility (HSM) USB Serial Driver

 **Honeywell Scanning and Mobility (HSM) USB Serial Driver**
 HSM USB Serial Driver version 3.4 ... bxt 3.4.11 HSM USB Serial Driver version 3.4 ...
 findUsbPkgVer.exe HSM USB Serial Driver version 3.4 ...
 Date: 10/14/2015 Size: 5MB
<https://www.honeywellaidc.com/CatalogDocuments/HSM USB Serial Driver version 3.4.11.zip>

Make sure the scanner is unplugged before continuing.

Now, download the latest version of the HSM USB Serial Driver from [this link](#).

7.1. Extract Files from the Zipped HSM USB Serial Driver version Folder

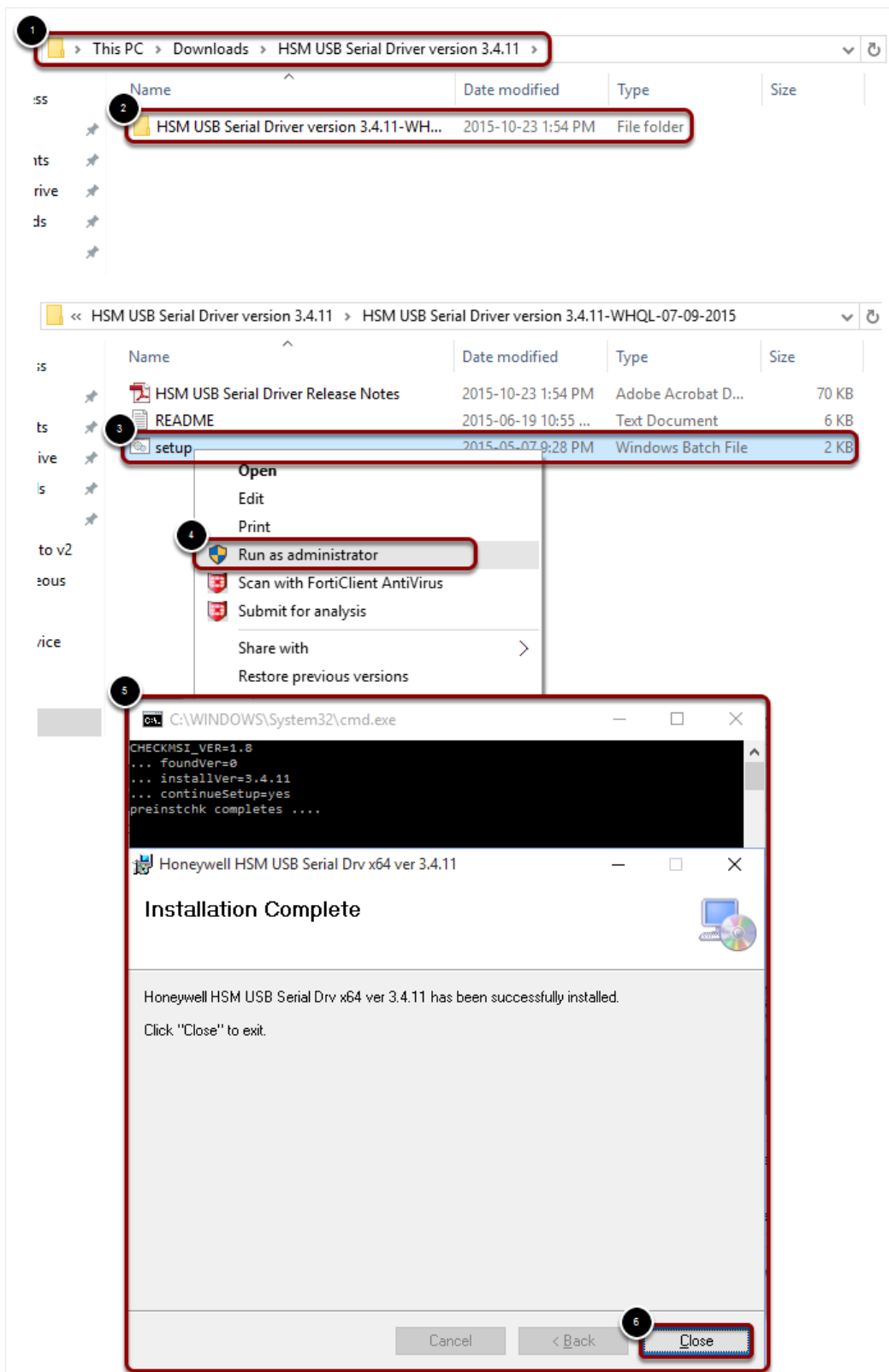


Next, navigate to the HSM USB Serial Driver version you have just installed.

You must extract the files from this zipped folder. To process the extraction:

1. Right click on the zipped folder.
2. Click "Extract All..."
3. Select a location for the extracted files that will be easy to navigate to (and somewhere you can easily remember).
4. Click the **Extract** button to complete the process.

7.2. Run the Installation File

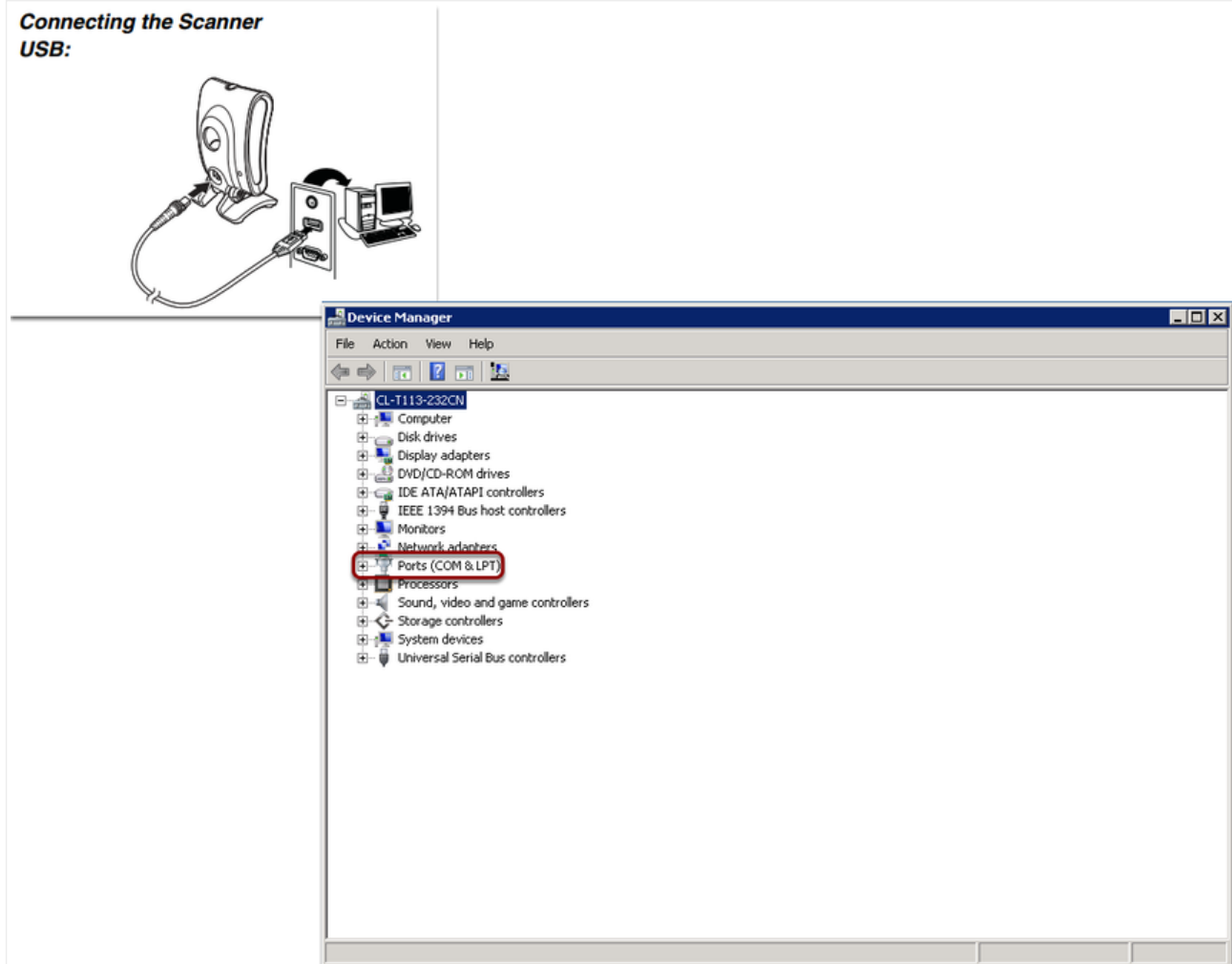


Now you must run the extracted setup file. To begin:

1. Navigate to the folder that you selected during the extraction process.
2. Double-click on the HSM USB Serial Driver version folder.
3. Right-click on the "setup.bat" file.
4. Click **Run As Administrator**. This will open up the Installation Configuration Wizard.
5. The Installation Wizard will guide you through the installation process.
6. Click Close to close the wizard once the process is finished. The Driver is now installed.

Note: This is one of multiple ways to install the driver. This method is recommended if the <driver install directory> is stored locally on the target machine. Do not use this method if the <driver install directory> is stored in a network location. For more information, please read the README file found in the HSM USB Serial Driver version folder.

8. Plug the Scanner in and Determine its COM Port Assignment

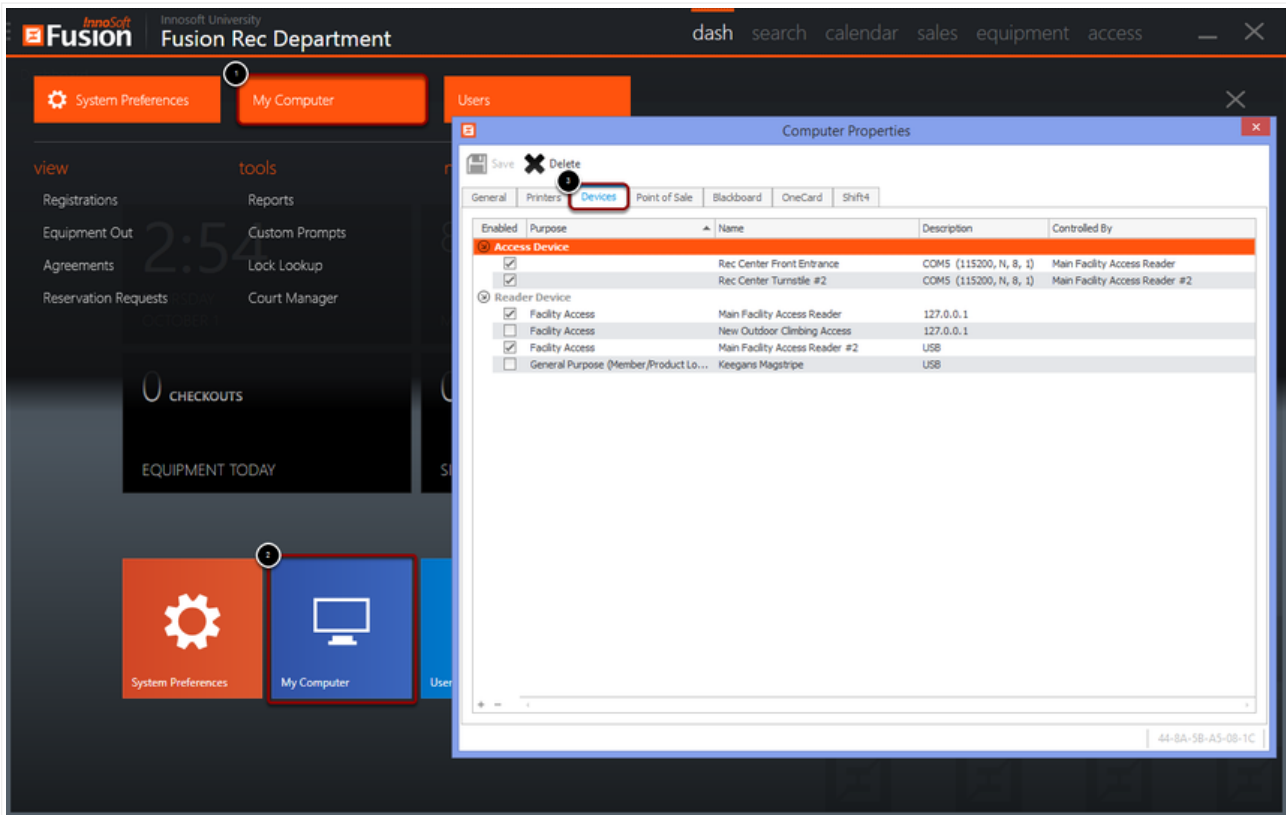


After successfully installing the HSM USB Serial Driver, plug the scanner into the USB Port. It will automatically be assigned a COM Port.

Note the COM Port assigned as you will need to enter it as soon as you configure the scanner within Fusion.

Hint: If you miss the COM port assignment during this step, you can also verify your scanner's COM port by accessing your computer's Device Manager utility. The scanner and its COM port should be listed under the expanded **Ports (COM & LPT)** section.

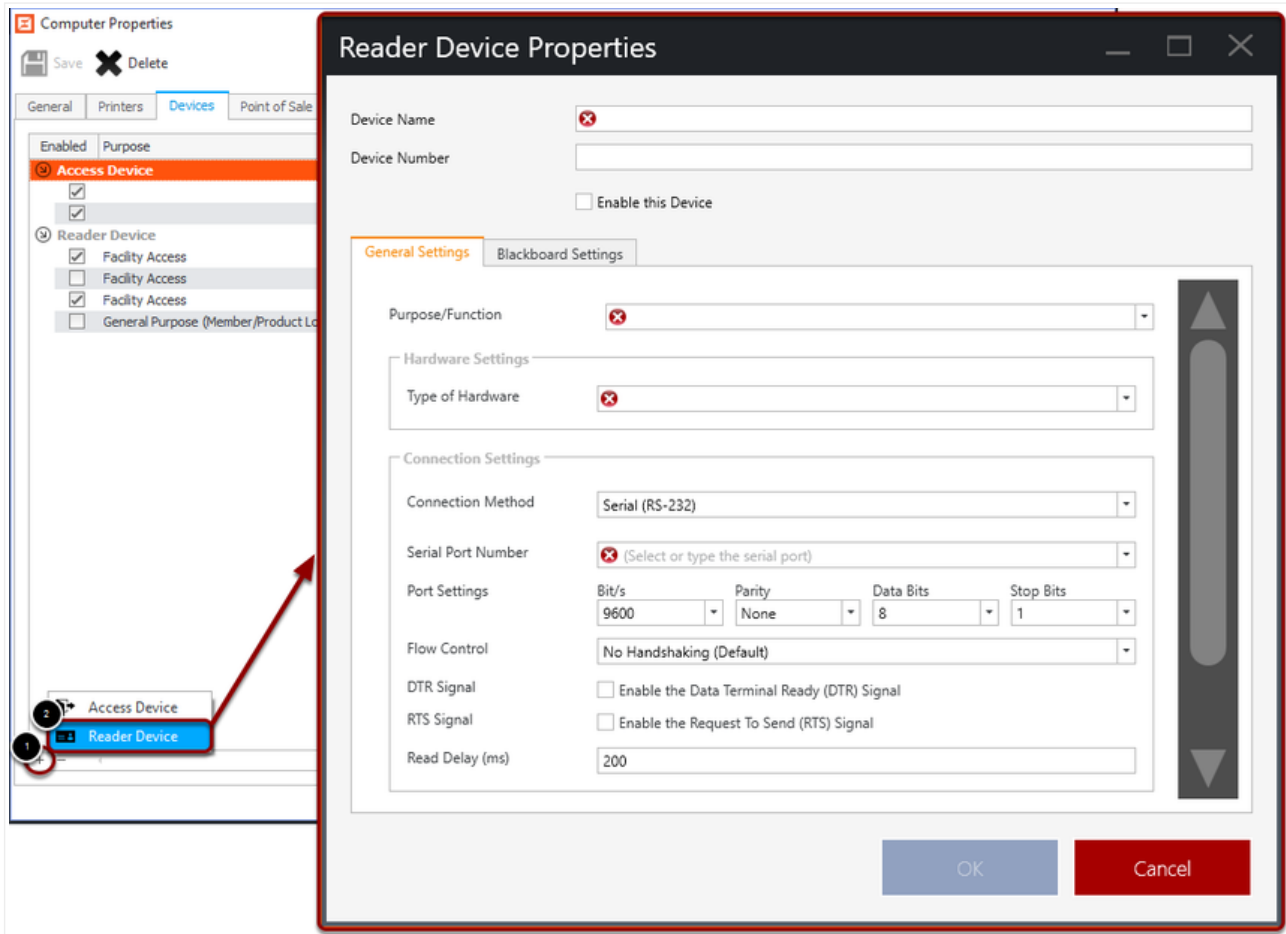
9. Configure the Scanner in Fusion



Now, proceed to Fusion to complete the final configuration steps. To begin, first navigate to **My Computer**. This can be done:

1. By clicking the **Fusion Button**, followed by the orange **My Computer** button, or:
2. By clicking directly on the **My Computer Tile** from the Dashboard. The **Computer Properties** configuration window will appear.
3. Click on the **Devices** tab.

9.1. Add a New Reader Device



Now, add the scanner as a new Reader Device. To do so:

1. Click once on the **Plus** icon.
2. Select "Reader Device."

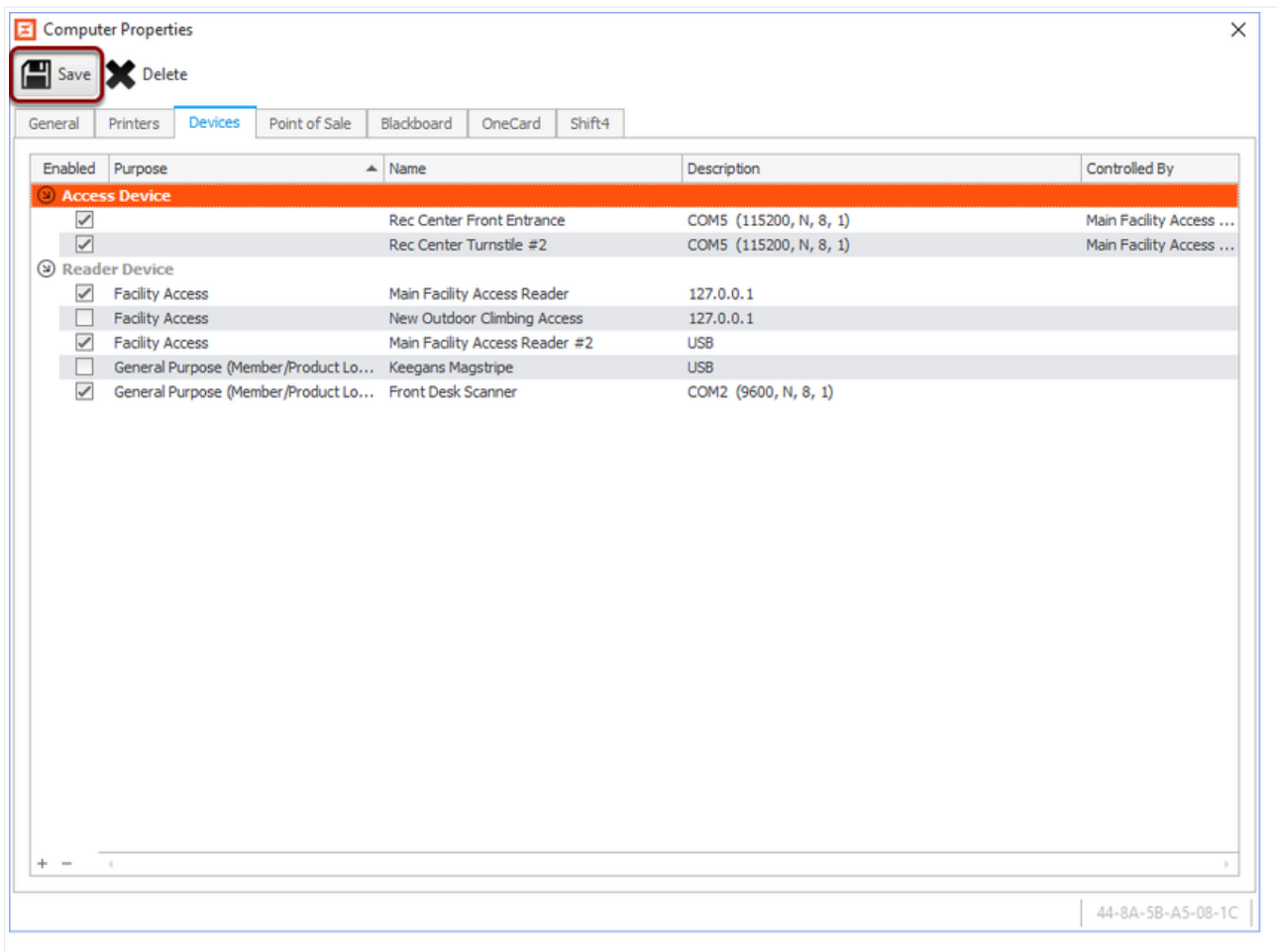
The **Reader Device Properties** configuration window will appear.

9.2. Configure Device Properties

Now, configure all required settings within the **Reader Device Properties** configuration window:

1. Enter an appropriate name for the scanner.
2. Check **Enable this Device**.
3. Select the appropriate purpose for this scanner (most likely "General Purpose (Member/Product Lookup)").
4. Select **Barcode Scanner/General Meters** as the type of hardware.
5. Set the connection method to **Serial (RS-232)**.
6. Enter the serial port number obtained in Step 7 of this lesson.
7. Click **OK** to save these settings.

9.3. Save Your Work and Restart Fusion



Within the **Computer Properties** window, click the **Save** icon to save your new device.

Once you have saved the device, exit and restart Fusion.

The barcode scanner should now be fully operational.

10. Troubleshoot the Device



If you encounter issues with this scanner at any point, you can reset the device to factory settings by scanning the barcode above (and then start the configuration over again from scratch).

Please reference the scanner's complete user manual [here](#) for more information.

Was this article helpful? 0 out of 0 found this helpful

Have more questions? [Submit a request](#)

0 Comments

Be the first to write a comment.



Recently viewed articles

[How to Install Fusion to a Local Workstation](#)

Related articles


[How to Configure a Honeywell 3800g Barcode Scanner](#)

[How to Install Fusion to a Local Workstation](#)

[Barcode Scanner Troubleshooting](#)

[Release Notes V3.5](#)

[Compatible Hardware](#)

 Powered by Zendesk